



DESCRIPTION

Merchants Row bring to market a stunning first floor three bedroom apartment for sale in the beautiful Vista development by St George. The apartment is circa 1,174sq. ft and perfectly positioned just south of the river Thames adjacent to Battersea Park. Cascade House is uniquely designed, with magnificent large windows giving exquisite park views and superbly finished floorings through to kitchens and bathroom of the highest specification expected of such a product. Secured under ground parking included.

LOCATION

The Cascades are ideally located with Battersea and Queenstown train stations being just a few minutes away whilst Victoria, Vauxhall and Waterloo are within easy reach.

PRICE

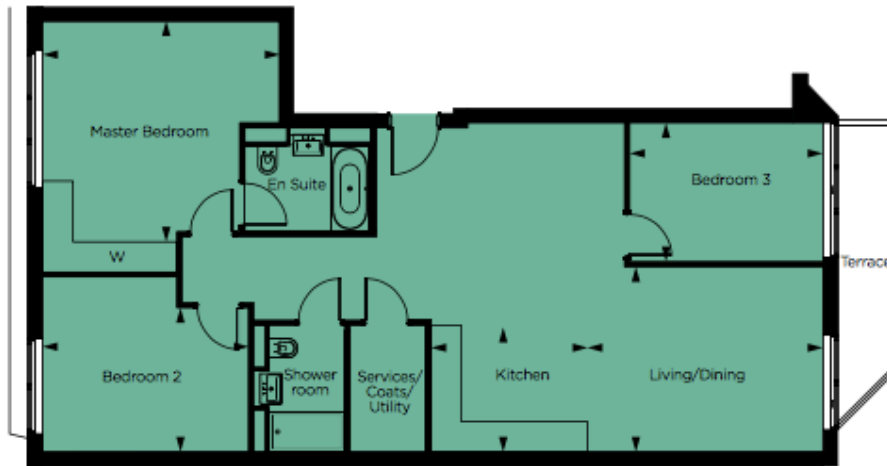
£1,450,000 (£1,235/sqft)

FEATURES

- ✓ Walking distance to Sloane Square
- ✓ Residence leisure facilities
- ✓ Park Views
- ✓ Private Terrace
- ✓ Stunning 3 Bedroom apartment
- ✓ 10 year warranty
- ✓ 24 Hour Concierge

TERMS

Leashold: 999 years remaining



Apartment	1.1.3	
Floor	1	
Kitchen	8'2" x 10'10"	2500mm x 3300mm
Living/Dining	14'7" x 12'0"	4435mm x 3657mm
Master Bedroom	15'4" x 14'3"	4670mm x 4350mm
Bedroom 2	13'4" x 9'4"	4066mm x 2850mm
Bedroom 3	12'6" x 9'0"	3815mm x 2743mm
Total	1,174 sq ft	109.1 sq m