



### DESCRIPTION

This brand new duplex ground and lower ground floor three bedroom apartment, c.1456 sq. ft. has been expertly planned with exceptional attention to detail. With magnificent large windows, superb finishes and quality engineered timber flooring, the living area is truly impressive. The kitchen area comprises cabinets in subtle satin finishes and beautiful stone work surfaces combined with high quality appliances to create the perfect balance of elegance and practicality. Includes one car parking space.

### LOCATION

Vista is Berkeley Homes latest spectacular new development, situated on Chelsea Bridge, opposite Battersea Park. It will offer landscaped gardens and spectacular views over the park. Located just south of Chelsea, it is well situated for the amenities of Sloane Square and the Kings Road. It is also next door to the prestigious Battersea Power Station development. There are a variety of bus routes over the bridge into Central London whilst the nearest overland stations are Battersea Park and Queenstown Road which go into Victoria and Waterloo respectively.

### PRICE

£1,785,000 (£1225/sqft)

### FEATURES

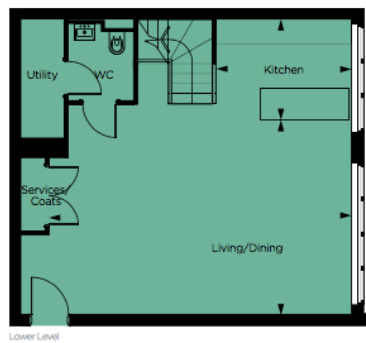
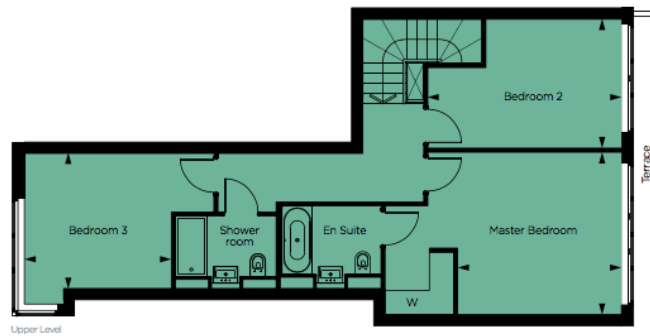
- ✓ 3 Bedrooms, 1 master suite
- ✓ Ground & Lower Ground
- ✓ 1,456 sqft
- ✓ Large Reception
- ✓ Residence Business Suite
- ✓ Residence Leisure facilities
- ✓ Private Terrace

### TERMS

Leasehold: Approx. 999 Years Remaining



## 3 BEDROOM DUPLEX APARTMENT



Apartment	1.811	
Floor	81/Ground	
Kitchen	11'0" x 8'6"	3360mm x 2600mm
Living/Dining	24'9" x 15'6"	730mm x 4730mm
Master Bedroom	13'4" x 13'3"	4060mm x 4030mm
Bedroom 2	15'9" x 10'6"	4800mm x 3200mm
Bedroom 3	11'11" x 11'0"	3645mm x 3355mm
Total	1,456 sq ft	135.3 sq m

N

1.811  
 81.1  
 81.2

Apartment number  
 Level number  
 Lift store number

→ Details measurement points

Floor plans shown are for approximate measurements only and are not to scale. Exact layout and sizes may vary. All measurements may vary within a tolerance of 5%.